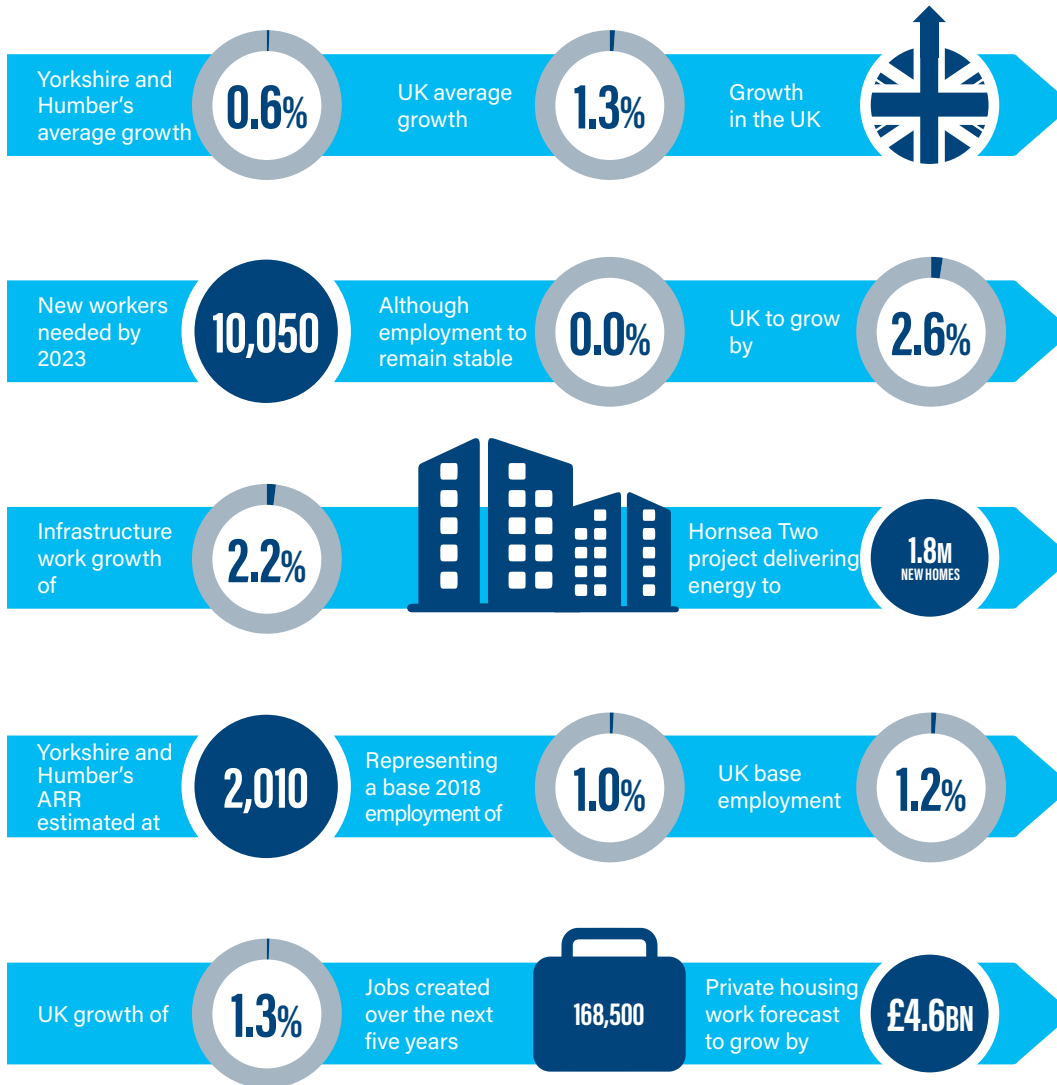


CONSTRUCTION SKILLS NETWORK YORKSHIRE AND HUMBER 2019-23



Although employment levels will remain steady, Yorkshire and Humber will still need to recruit over 10,000 new workers into construction to meet expected levels of work over the next five years.

GROWTH RATE

Construction output in Yorkshire and Humber is forecast to grow at an average annual rate of 0.6% from 2019 to 2023, which is less than half of the UK growth rate of 1.3%. Work in the infrastructure (2.2%) and public-housing sectors (2.5%) are the most prominent drivers of growth, along with private housing (0.9%) and housing repair and maintenance (1.6%) work.

JOB CREATION

The low level of output growth in the region means that construction employment is forecast to remain steady at around 200,000 workers per year between 2019 and 2023. Along with other regions, Yorkshire and Humber is expected to see slightly more pressure for demand in managerial, professional and technical occupations.

ANNUAL RECRUITMENT REQUIREMENT (ARR)

Although employment levels will remain steady, Yorkshire and Humber will still need to recruit new workers into construction to meet expected levels of work.

The region has an estimated average ARR for 2,010 new workers each year, which is equivalent to 1.0% of the 2018 workforce.

MAIN GROWTH DRIVERS/CONTRACTS

The infrastructure and housing sectors are expected to be the main drivers of growth in the region, with the latter being likely to account for 23% of all new work in the region this year, up from 19% in 2017. Plans have been revealed for 38 affordable homes to be built on a former North Lincolnshire Council depot site on Station Road in Scunthorpe. The homes will be a mixture of two, three and four bedrooms. This development would be part of a wider £25m project to build 240 new affordable homes. Onshore work for Hornsea Two wind farm is expected to start in March, with completion of the project due for 2022. This will be supported by a range of improvement works being carried out by Yorkshire Water, as well as rail and flood alleviation projects in Leeds.